



Milwaukee Succeeds

**Success for every
child, in every school,
cradle to career.**

101 W. Pleasant Street, Suite 210
Milwaukee, WI 53212
414.336-7035
www.MilwaukeeSucceeds.org

Milwaukee Succeeds

Milwaukee Succeeds is an extensive community partnership, working to ensure success for every child in every school – cradle to career.

We do this by

- *Measuring what matters*
- *Promoting best practices*
- *Aligning resources to support what works*



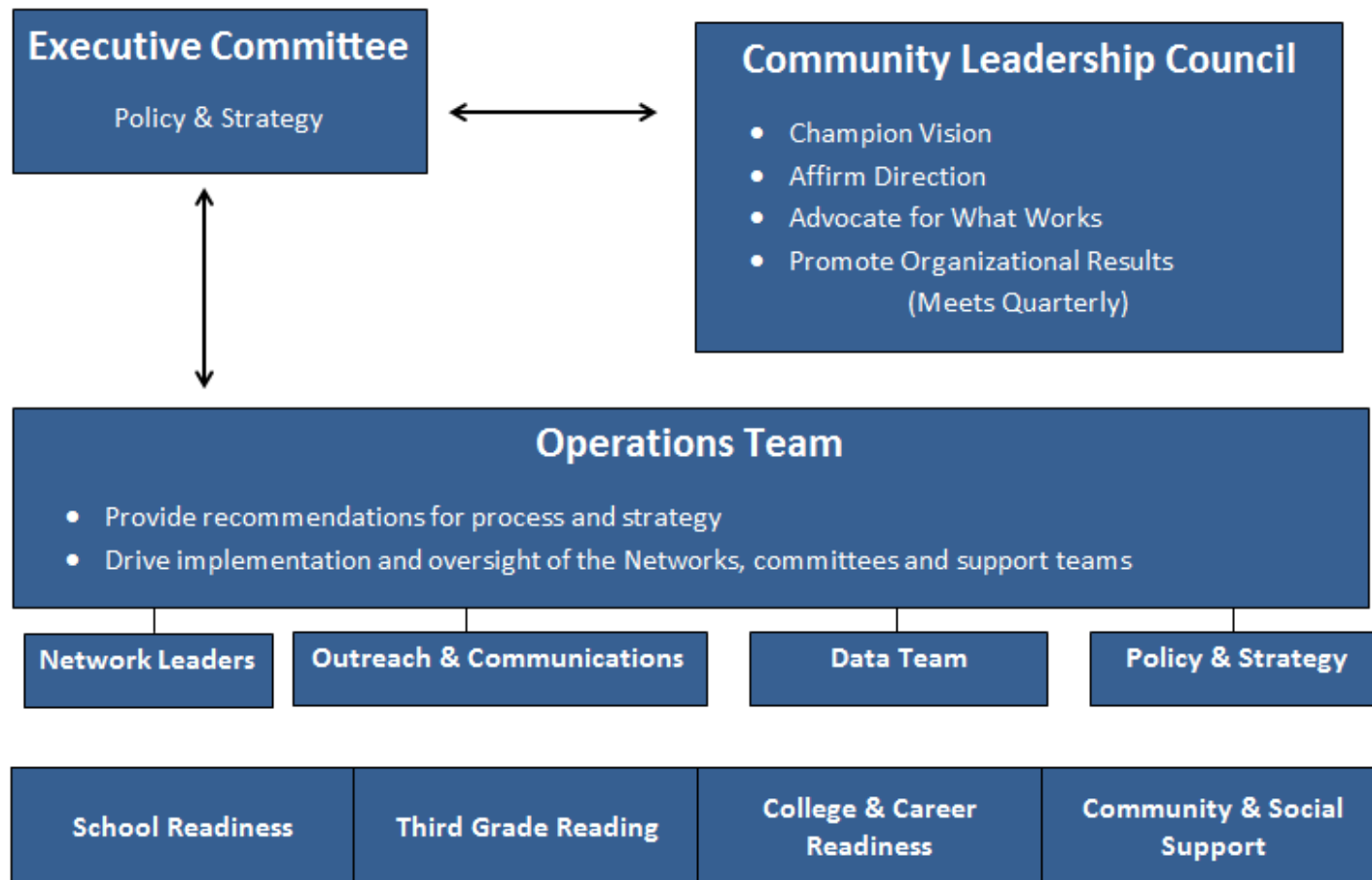
How Milwaukee Succeeds Got Started

- Anchor Organization
- Funding Commitment
- Strive Guidance
- Inclusive Table
- Mission, Vision & Goals
- Community Outreach for Operations Development (Metrics, Organization, Goals)

MKE Succeeds - Profile

- 2.5 Years Old
- Housed within Backbone Organization
- 2.5 FTE Staff
- \$450,000 Budget
- 8 Networks
- Large Structure
 - 44 member Leadership Council
 - 13 member Exec Committee
 - 20 member Ops Team
 - 4 Ops Team Committees
- 5 half-time staff “loaned” to us
- 16-20 volunteer Master Black Belt Coaches
- Significant in-kind corporate support
- @ 300 groups involved

Accountability Structure





Students' Road Map to Success

Academic Support

Early Childhood/School Readiness (Birth – age 5)

Goal 1: All children are prepared to enter school

K-12 Academic Success

Goal 2: All children succeed academically and graduate prepared for work and/or college

Post-secondary Success

Goal 3: All young people utilize postsecondary education or training to advance beyond high school & prepare for a successful career



Birth



Kindergarten



3rd Grade



High School



College-Career

Goal 4: All children are healthy and are supported socially and emotionally



Educating a Child – Takes “Great Schools” and Much More

A Great Start

Great Schools

Community Involvement

Physical, Social & Emotional Support



Parent Involvement

Learning Supports

Extensive Partnerships

School Readiness

- 65 Partner Organizations

3rd Grade Reading

- 75 Partner Organizations

College & Career Readiness

- 40 Partner Organizations



Birth



Kindergarten



3rd Grade



High School



College-Career

Community & Social Support

- 44 Partner Organizations



Extensive Partnerships



Birth



Kindergarten



3rd Grade



High School



College-Career

School Readiness - 65 organizations are involved in our three School Readiness Networks – working to ensure that all children are prepared to enter school.

Goals:

Double the number of children attending high quality child care centers

Increase the childhood immunization rate to 80%, up from 55%

Implement an integrated city-wide system to assess the social & emotional health of children from birth to age 5

3rd Grade Reading - 75 organizations are working in three Networks to increase 3rd grade reading proficiency from 15% to 38% by 2020.

Goals:

By the year 2020, 2,000 more 3rd grade students will be proficient in reading than today (1,300 vs. 3,300)

Using Parent Coordinators and Parent Workshops - provide parents more resources to assist their children to read. To see a Parent Workshop testimonial click here.

Expand students' understanding of the world around them through the "Read to Succeed" program:
www.milwaukesucceeds.org/read

Postsecondary & Career Readiness— 40 organizations are involved— working to increase ACT scores to 22. To reach this goal— 1,600 more students will need to attain ACT college readiness benchmarks by 2020.

Goals:

Create a “college going culture”

Assist students to access careers in high demand fields

Help students with the transition from 8th grade to high school and from high school to postsecondary education or to a career

Community and Social Support - 44 organizations are involved in this Network— working to ensure that children are healthy and supported socially and emotionally.

Goals:

Identify one standard to measure the social and emotional wellbeing of children and young adults

Ensure that resources to improve social and emotional health are delivered through a “place based” delivery system

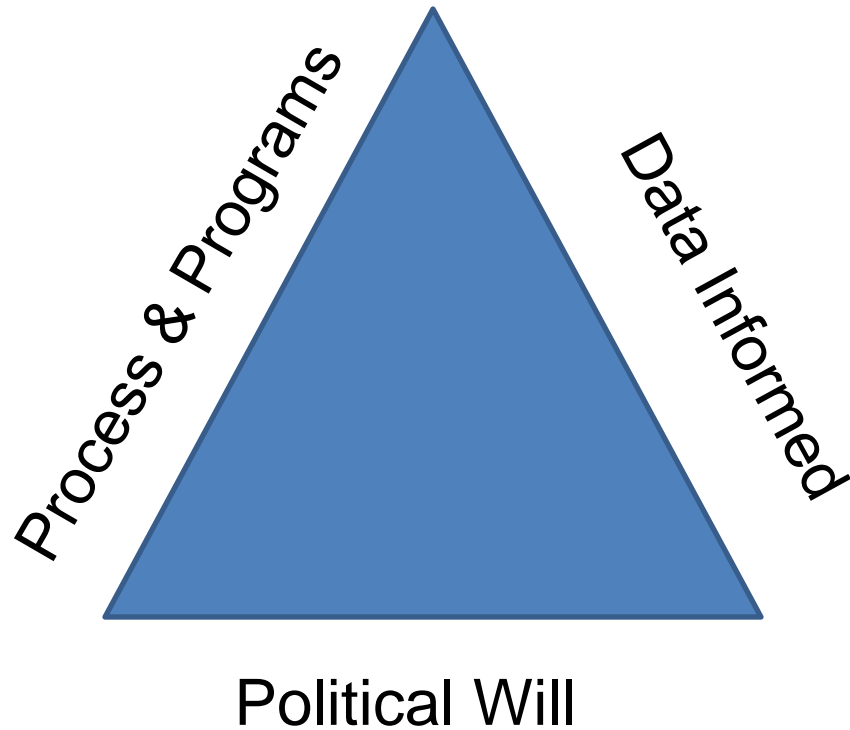
Develop resiliency skills in youth and adults who have experienced significant trauma in their life



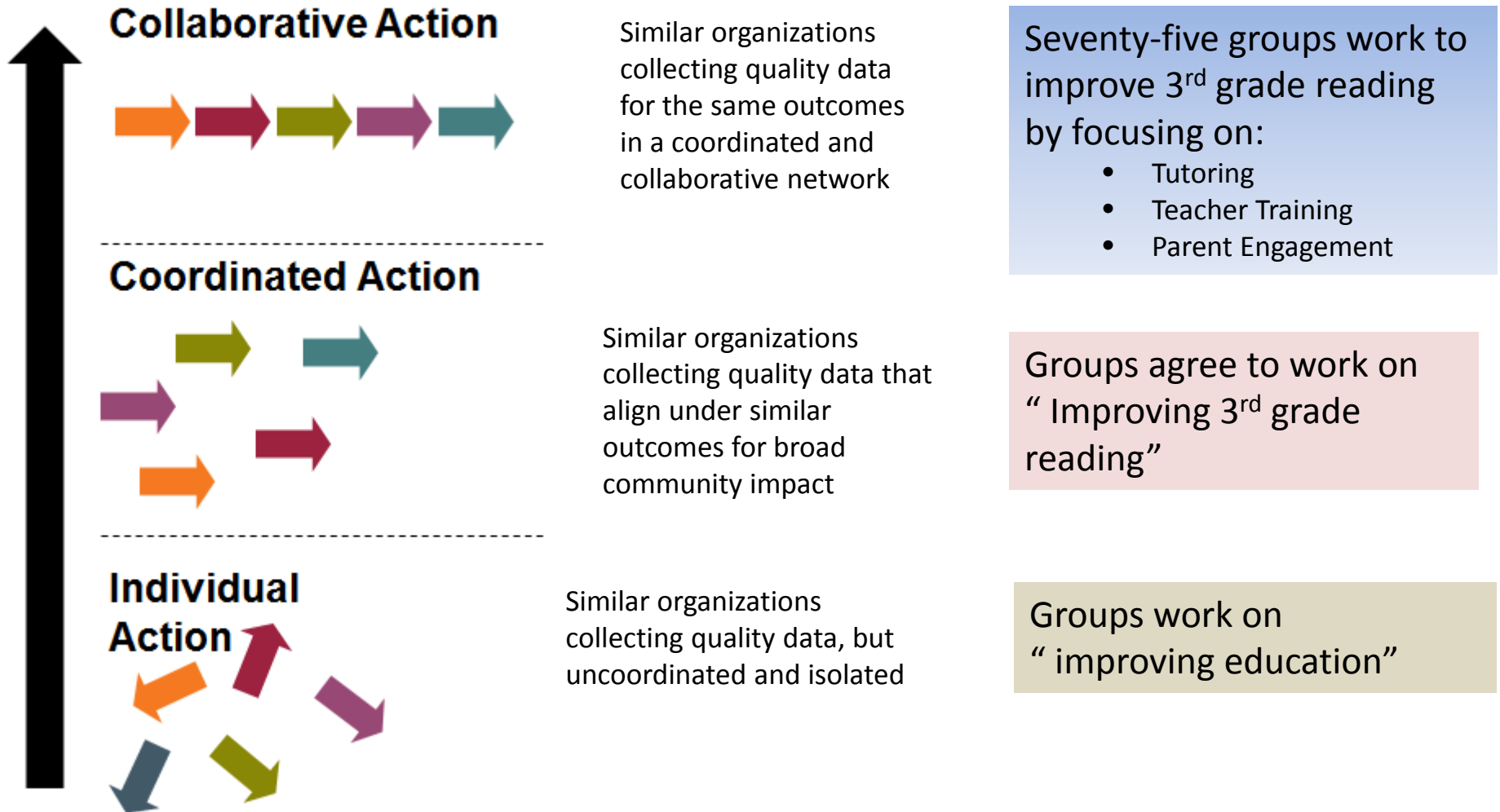
Systems Change

COLLECTIVE IMPACT

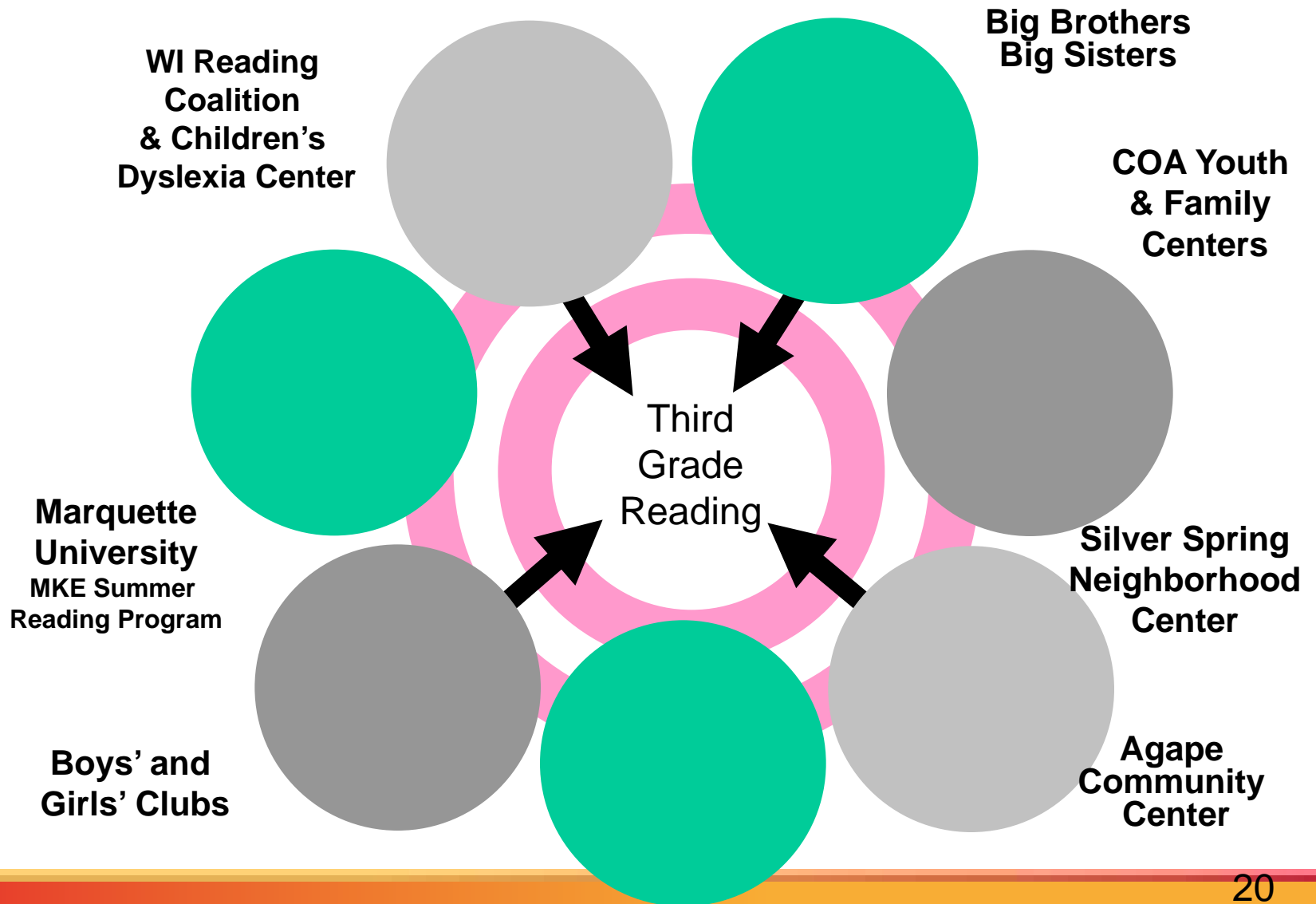
Systems Change

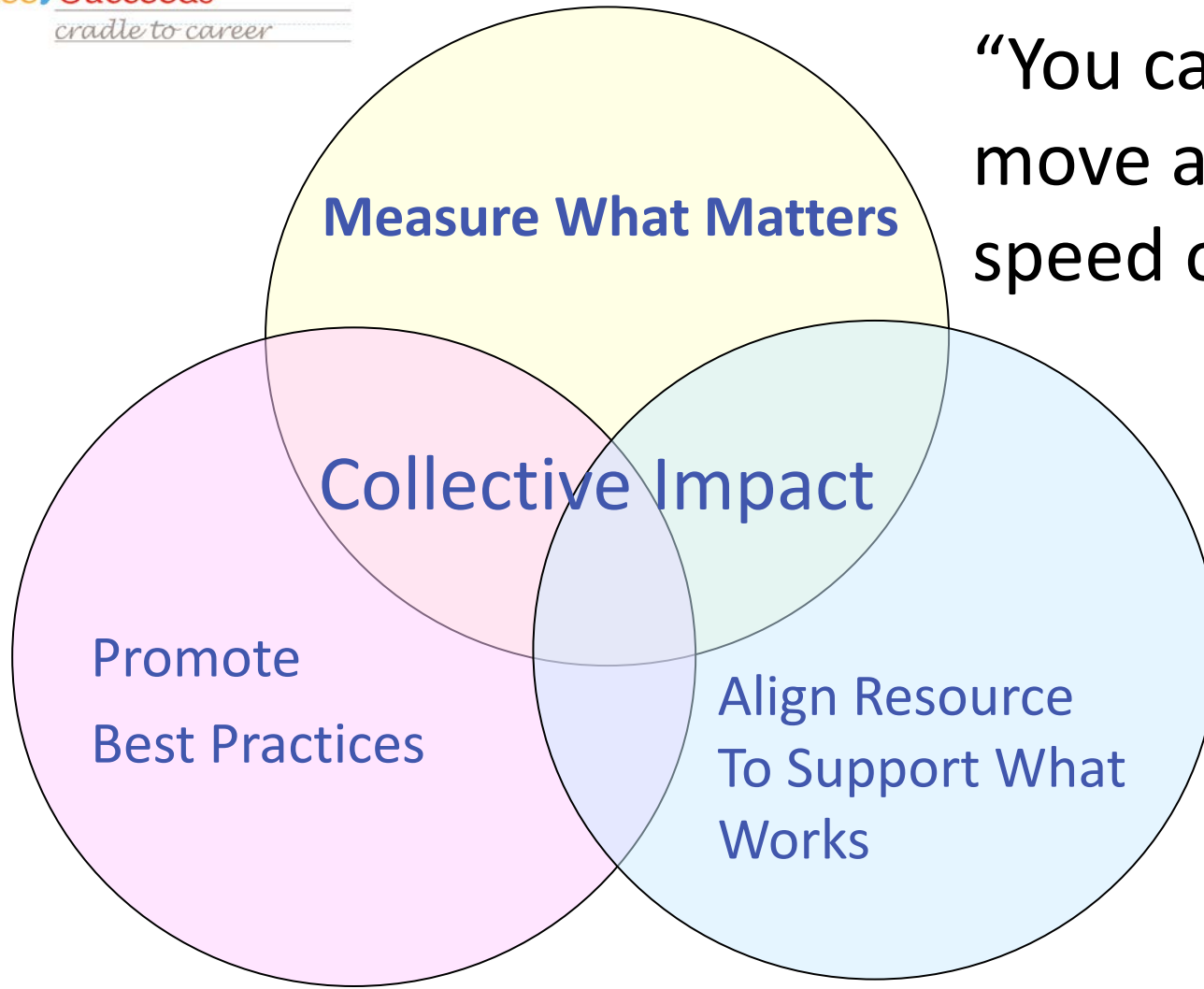


From Individual to Collaborative Action



3rd Grade Reading Collaborative Action Network





“You can only move at the speed of trust”

MAYBE I'M A *hopeless optimist*.
MAYBE I'M *naive*. MAYBE I'M
UNREALISTIC. MAYBE MY
Educational Expertise
ISN'T SUFFICIENT TO ANTICIPATE
HOW MUCH **CAN** AND **WILL**
GO *wrong*. OR MAYBE I JUST
CAN'T BEAR THE THOUGHT OF
failing the kids again.

IT DOESN'T MATTER.
I'M ALL IN.
AND FOR THE LONG HAUL.

-Dr. William Henk
Dean, College of Education, Marquette University